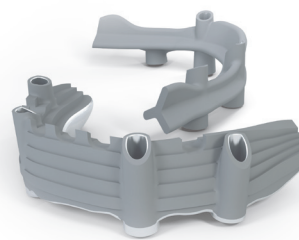


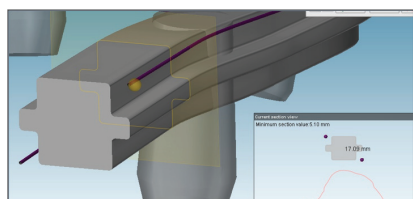
Straumann® CARES® Screw Retained Bars for Straumann® Pro Arch



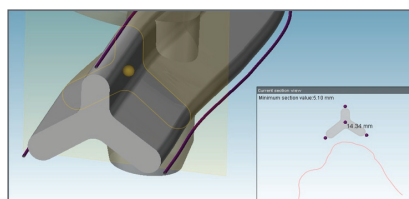
CARES® BARS FOR IMMEDIATE FIXED FULL ARCH CASES

There are many approaches to a fixed, screw-retained hybrid solution. Each patient's desired functional and esthetic result may differ; the restorative team needs flexible solutions to accommodate the anatomical situation and the preferred final restoration. Straumann CARES labs offer multiple bar types. Different design profiles and tools modify the geometry of the bar for the desired functional and esthetic result.

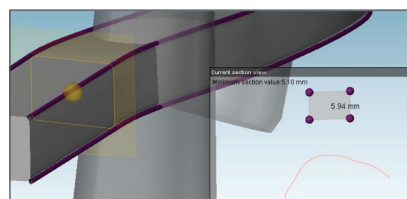
CARES® BASIC FIXED BAR FOR FULL ACRYLIC WRAP AROUND – 3 PROFILES AVAILABLE



Cross Profile



Lambda Profile

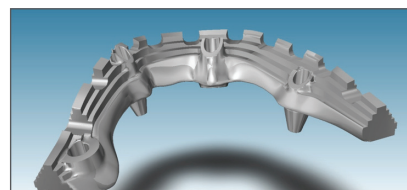
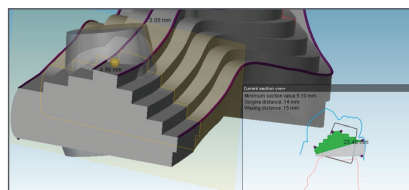
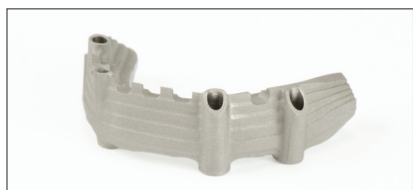


Trapezoid Profile

CARES® labs can create retention elements for complete or partial acrylic wrap around.

Four control points at each corner allow the CDT to change the size, position and/or orientation of the geometry.

CARES® ADVANCED FIXED BARS FOR PARTIAL ACRYLIC WRAP AROUND – WITH ORAL METAL BACKING



Staircase Retention: Five control points allow CARES labs to modify the geometry for the desired functional and esthetic results. Two control points are available for the Staircase Retention Rail; one control point for the Acrylic finishing line; and two control points for the oral metal backing.

10 years. Original quality. CARES bars are covered under The Straumann Guarantee®, which provides 10 years coverage for metal bars, bridges and abutments.

CARES® MILLED BAR FOR OVERDENTURES

Machined threads accept LOCATOR® with M2 threads. CARES labs can change the geometry for the wall taper to allow the bar to accept vertical and lateral forces.



LOCATOR® available from Straumann separately

MY RECOMMENDED STRAUMANN CARES® LABS

CARES® SRBB SELECTION GUIDE FOR FIXED AND REMOVABLE RESTORATIONS

		Removable					Fixed			
		Dolder Bar	Dolder "U" "Egg" Shaped	Ackermann Bar	Round Bar	MP-Clip Bar	Milled Bar Design	Screw-Retained TL/BL Bridges	Basic Fixed Bar (Wrap Around)	Advanced Fixed Bar
coron®	TL	✓	✓	✓	✓	✓	✓	✓	✓	✓
	BL	✓	✓	✓	✓	✓	✓	✓	✓	✓
	SRA	✓	✓	✓	✓	✓	✓	✓	✓	✓
Titanium	TL	✓	✓	✓	✓	✓	✓	✓	✓	✓
	BL	✓	✓	✓	✓	✓	✓	✓	✓	✓
	SRA	✓	✓	✓	✓	✓	✓	✓	✓	✓

✓ Available

ACCESSIBILITY FROM EVERY LABORATORY

Did you know that Straumann has an on-demand laboratory service, CARES® Scan & Shape?

- The entire CARES Bars portfolio is available to your favorite laboratory.

For more information on Straumann CARES® SRBB, call 866/531 7365 or contact your Straumann Territory Manager today!

International Headquarters

Institut Straumann AG
 Peter Merian-Weg 12
 CH-4002 Basel, Switzerland
 Phone +41 (0)61 965 11 11
 Fax +41 (0)61 965 11 01

Straumann North American Headquarters

60 Minuteman Road
 Andover, MA 01810
 Phone 800/448 8168 (US) • 800/363 4024 (CA)
 Fax 978/747 2490
www.straumann.us • www.straumann.ca